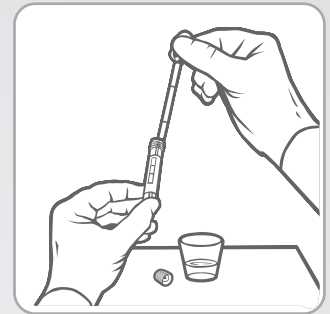


## Collection for Male and Female Urine Specimens

*Patient should not have urinated for at least 1 hour prior to specimen collection.*

1. Direct patient to provide first-catch urine (approximately 20 to 30 mL of initial urine stream) into urine collection cup free of any preservatives. Collection of larger volumes of urine may result in specimen dilution that may reduce test sensitivity. Female patients should not cleanse labial area prior to providing specimen.
2. Remove cap from urine specimen transport tube and transfer 2 mL of urine into urine specimen transport tube using disposable pipette provided. The correct volume of urine has been added when fluid level is between black fill lines on urine specimen transport tube label.
3. Re-cap urine specimen transport tube tightly. This is now known as the "processed urine specimen."



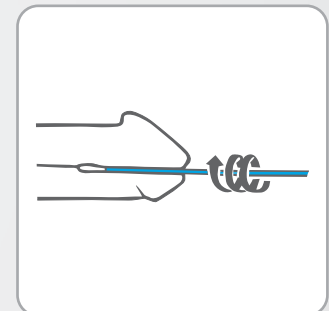
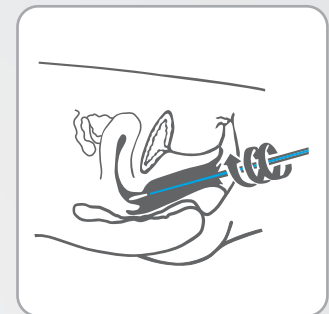
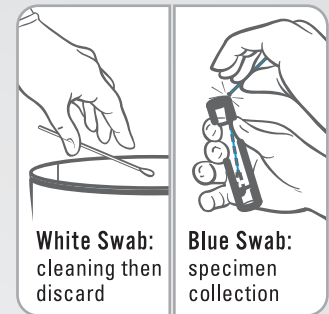
## Specimen Transport and Storage

1. After collection, transport and store the processed urine specimens in the APTIMA urine specimen transport tube at 2°C to 30°C until tested. Processed urine specimens should be assayed with the APTIMA Assay for CT and/or GC within 30 days of collection. If longer storage is needed, freeze at -20°C to -70°C for up to 90 days after collection.
2. Urine samples that are still in the primary collection container must be transported to the lab at 2°C to 30°C. Transfer urine sample into APTIMA urine specimen transport tube within 24 hours of collection. Store at 2°C to 30°C and test within 30 days of collection.



## Collection for Endocervical Swab Specimens

1. Remove excess mucus from cervical os and surrounding mucosa using cleaning swab (white shaft swab in package with red printing).  
**Discard this swab.**  
*A large-tipped cleaning swab (not provided) may be used to remove excess mucus.*
2. Insert specimen collection swab (blue shaft swab in package with green printing) into endocervical canal.
3. Gently rotate swab clockwise for 10 to 30 seconds in endocervical canal to ensure adequate sampling.
4. Withdraw swab carefully; avoid any contact with vaginal mucosa.
5. Remove cap from swab specimen transport tube and immediately place specimen collection swab into specimen transport tube.
6. Carefully break swab shaft at scoreline; use care to avoid splashing contents.
7. Re-cap swab specimen transport tube tightly.



## Collection for Male Urethral Swab Specimens

*Patient should not have urinated for at least 1 hour prior to specimen collection.*

1. Insert specimen collection swab (blue shaft swab in package with green printing) 2 to 4 cm into urethra.
2. Gently rotate swab clockwise for 2 to 3 seconds in urethra to ensure adequate sampling.
3. Withdraw swab carefully.
4. Remove cap from swab specimen transport tube and immediately place specimen collection swab into specimen transport tube.
5. Carefully break swab shaft at scoreline; use care to avoid splashing contents.
6. Re-cap swab specimen transport tube tightly.

## Specimen Transport and Storage

After collection, transport and store swab in swab specimen transport tube at 2°C to 30°C until tested. Specimens must be assayed with the APTIMA Assay for CT and/or GC within 60 days of collection. If longer storage is needed, freeze at -20°C to -70°C for up to 90 days after collection.





## Improper Sample Collection Results In Sample Rejection

Collect and Send  
to the Lab....  
One (1) **BLUE**  
Swab Only.

