



ACCU-CHEK® Inform II

BLOOD GLUCOSE MONITORING SYSTEM

Addendum to the Operator's Manual

ACCU-CHEK Inform II Base Unit (NEW)

Revision History

Document version	Revision date	Changes
Version 1.0	2015-07	New Document, Addendum to Operator's Manual: ACCU-CHEK Inform II Base Unit (NEW) - description of changes

Purpose of document

This document provides additional information to the Operator's Manual.

This addendum is valid for and intended to be used in conjunction with the ACCU-CHEK Inform II Operator's Manual (all versions up to 5.0). It is not a replacement for the complete ACCU-CHEK Inform II Operator's Manual.



Be sure to read the complete ACCU-CHEK Inform II Operator's Manual.

© 2015, Roche Diagnostics. All rights reserved.

The contents of this document, including all graphics, are the property of Roche Diagnostics. No part of this document may be reproduced or transmitted in any form or by any means, electronic or mechanical, for any purpose, without the express written permission of Roche Diagnostics. Roche Diagnostics has made every reasonable effort to ensure that all the information contained in this manual is correct at the time of printing. However, Roche Diagnostics reserves the right to make any changes necessary without notice as part of ongoing product development.

Please send questions or comments about this document to your local Roche representative.

Purpose of document	2
Addendum to Operator's Manual: ACCU-CHEK Inform II Base Unit (NEW)	5
Changes.....	5
Overview of the ACCU-CHEK Inform II Base Unit (NEW).....	6
Connecting the ACCU-CHEK Inform II Base Unit (NEW)	7
Technical data	8
Further Information	9
Ordering.....	9

This page intentionally left blank.

Addendum to Operator's Manual: ACCU-CHEK Inform II Base Unit (NEW)

The following description of changes applies **only** to the ACCU-CHEK Inform II Base Unit with NEW hardware/software (REF 07671717190).

For a description of older versions of the ACCU-CHEK Inform II Base Unit (REF 05060290001) refer to the ACCU-CHEK Inform II Operator's Manual (all versions up to 5.0).

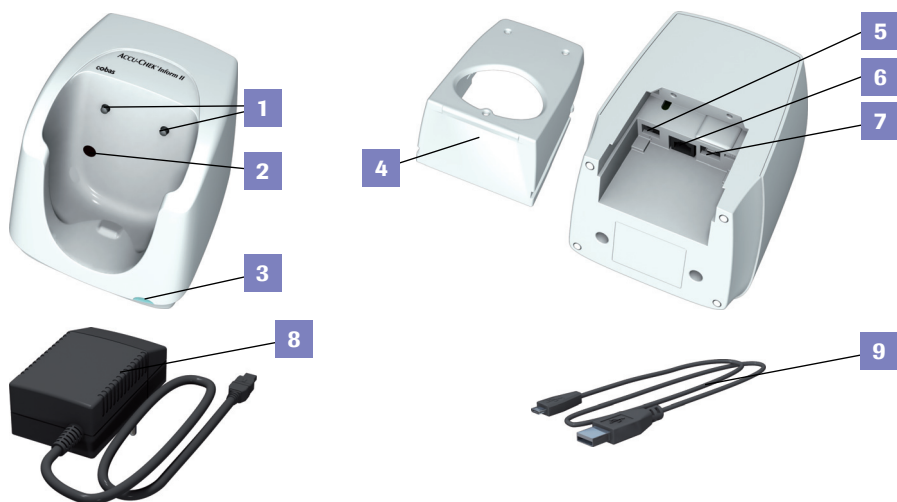
The ACCU-CHEK Inform II Base Unit Light remains unchanged; the description in the ACCU-CHEK Inform II Operator's Manual applies.

Changes

- New generation processor
- Faster boot time
- Redesigned charging contacts
- USB cable now has micro B connector plug
- Power cord with improved connector plug

Note for System Administrator: For further technical information on setting up and configuring the ACCU-CHEK Inform II Base Unit (NEW), consult the package insert accompanying the device and the "Technical Note" stored on the ACCU-CHEK Inform II Base Unit (NEW) as a PDF file. You can access this file by connecting the base unit to a PC with the USB cable.

Overview of the ACCU-CHEK Inform II Base Unit (NEW)

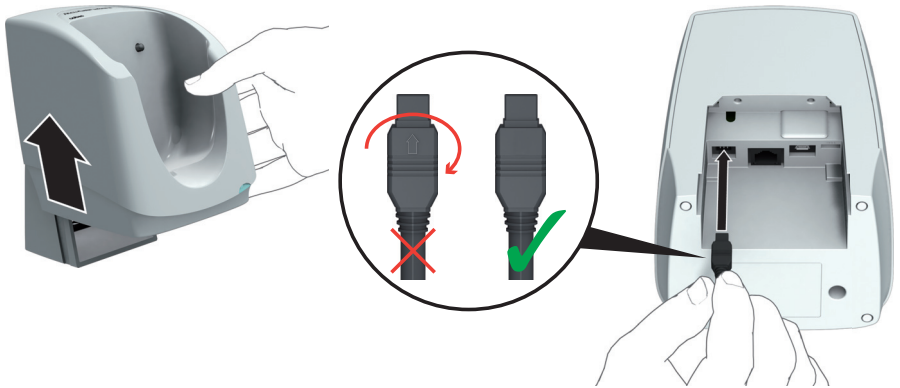


- | | | | |
|---|---------------------------------------|---|--|
| 1 | Charging contacts | 5 | Power input jack for the power supply unit |
| 2 | Infrared window | 6 | Network connection — LAN, Ethernet (RJ45) |
| 3 | Status LED | 7 | USB connection |
| 4 | Removable mount for wall installation | 8 | Power supply unit (12V \equiv 1,25A) |
| | | 9 | USB cable (USB A to USB micro B) |

Connecting the ACCU-CHEK Inform II Base Unit (NEW)

NOTICE

To ensure continuous safe and reliable operation, use only the power supply unit provided for the ACCU-CHEK Inform II Base Unit (for ordering information see page 9 of this Addendum).



- 1 Slide the base unit upward and remove it from the wall mount (if in use).
- 2 Connect the power supply to the power input jack.
- 3 **If you want to connect the ACCU-CHEK Inform II Base Unit in a wired environment:** Connect the Ethernet (RJ45) cable or the USB cable to the respective port. Use only the USB cable provided with the ACCU-CHEK Inform II Base Unit.
- 4 Slide the base unit back onto the wall mount (if in use). Please note that the ACCU-CHEK Inform II Base Unit Wall Mount fits the ACCU-CHEK Inform II Base Unit (both old and new versions) and the ACCU-CHEK Inform II Base Unit Light.

For details on configuring the ACCU-CHEK Inform II Base Unit, consult your Roche representative.

Technical data

Specification	ACCU-CHEK Inform II Base Unit (NEW)	Power supply unit (NEW)
Height	4.84 in / 123 mm (max.)	1.38 in / 35 mm + AC plug (1.1-1.6 in / 28-40 mm)
Width	5.12 in / 130 mm (max.)	2.01 in / 51 mm
Length	5.12 in / 130 mm (max.)	3.43 in / 87 mm
Weight	ACCU-CHEK Inform II Base Unit 671 g with wall mount	170 g
User interface	LED (tricolor: red, green, blue)	N/A
Operating temperature	37 to 122 °F 3 to 50 °C	32 to 104 °F 0 to 40 °C
Storage conditions (long-term storage)	41 to 104 °F / 5 to 40 °C at 10 - 85% RH (non-condensing)	
Humidity (operating)	10 - 90 % RH (non-condensing)	
Input voltage	+12V DC	100 to 240 V AC
Input frequency	DC	50 to 60 Hz
Input current	1.25 A (max)	350 to 150 mA
Interfaces	Charging contacts IR port RJ45 Ethernet USB type Micro B	DC connector Replaceable AC input contacts
Data transfer rate	IR: 9.6K - 115K bps Ethernet: 10/100 Mbps USB: 12 Mbps	N/A

Further Information

Ordering

Changes to the ordering information in the current ACCU-CHEK Inform II Operator' Manuals version 4.0 and 5.0 are shown in red.

Item	Description	REF/Catalog Number
ACCU-CHEK Inform II Meter	Meter, equipped with WLAN functionality	05060303001
ACCU-CHEK Inform II Battery Pack	Rechargeable battery pack (for meters with serial no. above UU14000000)	06869904001
ACCU-CHEK Inform II Battery Compartment Cover	Replacement cover for meter battery compartment (for meters with serial no. above UU14000000)	06869823001
ACCU-CHEK Inform II Base Unit Light	Equipped with charging functionality	05920353001
Power Supply	Power supply for Base Unit Light (North America)	05388805001
ACCU-CHEK Inform II Base Unit (NEW)	Equipped with charging and connectivity functionality	07671717190
Power Supply	Power supply for Base Unit (NEW) REF 07671717190 (North America)	07455976190
USB Cable Micro B	Replacement cable for Base Unit (NEW)	07572204001
ACCU-CHEK Inform II Base Unit Wall Mount	Wall Mount for Base Unit (fits old and new versions)/Base Unit Light	05404878001

Item	Description	REF/Catalog Number
ACCU-CHEK Inform II Base Unit Hub	Equipped with power and connectivity functionality for the ACCU-CHEK Inform II Base Unit Light	05888760001
Power Cord	Required to power the Base Unit Hub (North America)	03868133001
ACCU-CHEK Inform II Code Key Reader		04884671001
ACCU-CHEK Inform II Accessory Box Kit		05060281001
ACCU-CHEK Inform II Battery Pack	Rechargeable battery pack (for meters with older hardware and serial no. below UU14000000)	04882326001
ACCU-CHEK Inform II RF Card Kit	Wi-Fi card replacement (for meters with older hardware and serial no. below UU14000000)	05112699001

This page intentionally left blank.

ACCU-CHEK, ACCU-CHEK INFORM and COBAS
are trademarks of Roche.

RX only

Manufactured for and distributed in the U.S.A. by:
Roche Diagnostics
9115 Hague Road
Indianapolis, IN 46256



Roche Diagnostics GmbH
Sandhofer Strasse 116
68305 Mannheim, Germany
www.roche.com
www.accu-chekinformii.com/

0 7765053001 (01) 2015-07 EN-USA

ACCU-CHEK®